

## Circular Cassette (48000 BTU) Indoor Unit For Heat-recovery/Heat-pump Airstage VRF System

Job Name \_\_\_\_\_  
 Location \_\_\_\_\_  
 Engineer \_\_\_\_\_  
 Submitted To \_\_\_\_\_  
 Submitted By \_\_\_\_\_  
 Reference \_\_\_\_\_

Date \_\_\_\_\_  
 Approval \_\_\_\_\_  
 Construction \_\_\_\_\_  
 Unit No \_\_\_\_\_  
 Drawing No \_\_\_\_\_

### FEATURES

- Quiet 3 speed fan
- Built-in high-lift drain pump
- Optional IR Receiver
- Support for fresh-air intake kit
- Grille includes built-in modulating louvers
- Grille must be ordered separately (UTG-LCGVCW)
- Auxiliary heat operation capability
- 10 year Extended Warranty on parts and compressor. See Warranty Statement.



### PIPING ACCESSORIES

UTP-AX090A	Separation Tube - 2-Pipe - 90 MBH or Less
UTP-AX180A	Separation Tube - 2-Pipe - 91 to 180 MBH
UTP-AX567A	Separation Tube - 2-Pipe - 180 MBH or More

### CONTROLLER

UTY-RNRU22	Individual Touch Panel Controller (Wired Remote)
UTY-RSRY	Simple Remote (WITH Master Control) 2-Wire
UTY-RHRY	Simple Remote (WITHOUT Master Control) 2-Wire
UTY-DCGY	Central Remote Controller (100 units)
UTY-DTGYZ1	Touch Panel Controller with Internet (400 units)
UTY-APGX	System Controller (1600 units)
UTY-LBHxD	IR Receiver Kit

### ACCESSORIES

UTY-YDZK	Air outlet Shutter plate
UTZ-KXRA	Insulation for high humidity
UTY-SHZXC	Human sensor kit
UTG-AKXA-W	Wide Panel
UTG-BKXA-W	Panel Spacer

### WEIGHT AND DIMENSIONS

Enclosure - Net Weight - lbs [kg]	65 [29.5]
Enclosure - Gross Weight - lbs [kg]	75 [34]
Dimensions - Net (H x W x D) - in [mm]	11-5/16 x 33-1/16 x 33-1/16 [288 x 840 x 840]
Dimensions - Gross (H x W x D) - in [mm]	13-3/8 x 37-13/16 x 37-3/8 [340 x 960 x 950]
Grille Weight Net - lbs [kg]	13.0 [6.0]
Grille Weight Gross - lbs [kg]	0
Grille Dimensions Net (H x W x D) - in [mm]	2-1/16 x 37-3/8 x 37-3/8 [53 x 950 x 950]
Grille Dimensions Gross (H x W x D) - in [mm]	0

### CAPACITY

Capacity - Cooling - Btu/h [kW]	48,000 [14.1]
Capacity - Heating - Btu/h [kW]	54,000 [15.8]

### ELECTRICAL

Power Source	208 / 230V, 1-Phase, 60Hz
Available Voltage Range - VAC	187 to 253
Input Power - W	116
Full Load Amps - FLA - A	1.12
Max Circuit Breaker - A	15
Minimum Circuit Ampacity - MCA - A	1.4

### FAN

Fan Type	Turbo
Airflow Rate - High - CFM [m³/h]	1,201 [2,040]
Airflow Rate - Medium - CFM [m³/h]	936 [1,590]
Airflow Rate - Low - CFM [m³/h]	765 [1,300]

### SOUND PRESSURE

Sound Pressure Level - dB(A)	36/42/47
------------------------------	----------

### WIRING

Communication Cable	LonWorks (Fujitsu Pink Cable. See AE Bulletin 009)
---------------------	--

### PIPING

Connection Pipe Diameter - Liquid (Brazing) - in [mm]	ø 3/8 [9.52]
Connection Pipe Diameter - Gas (Brazing) - in [mm]	ø 5/8 [15.88]
Connection Pipe Diameter - Drain (ID; OD) - in [mm]	ø 3/4 [19]
Drain-Pump	Built-in
Drain-Pump Lift - in [mm]	27 9/16 [700]

### ETL

E.T.L.	3170288
--------	---------

### TEMPERATURE RANGES

Operating Temp. Cooling (DB) - °F [°C]	64 to 88 [18 to 31]
Operating Temp. Heating (DB) - °F [°C]	50 to 88 [10 to 31]

Note: Specifications are based on the following conditions:  
 Cooling: Indoor temperature of 80°F (26.7°C) DB/67°F (19.4°C) WB, and outdoor temperature of 95°F (35°C) DB/75°F (23.9°C) WB. Heating: Indoor temperature of 70°F (21.1°C) DB/60°F (15.6°C) WB, and outdoor temperature of 47°F (8.3°C) DB/43°F (6.1°C) WB. Pipe length: 25ft. (7.5m), Height difference: 0ft. (0m) (Outdoor unit - indoor unit).



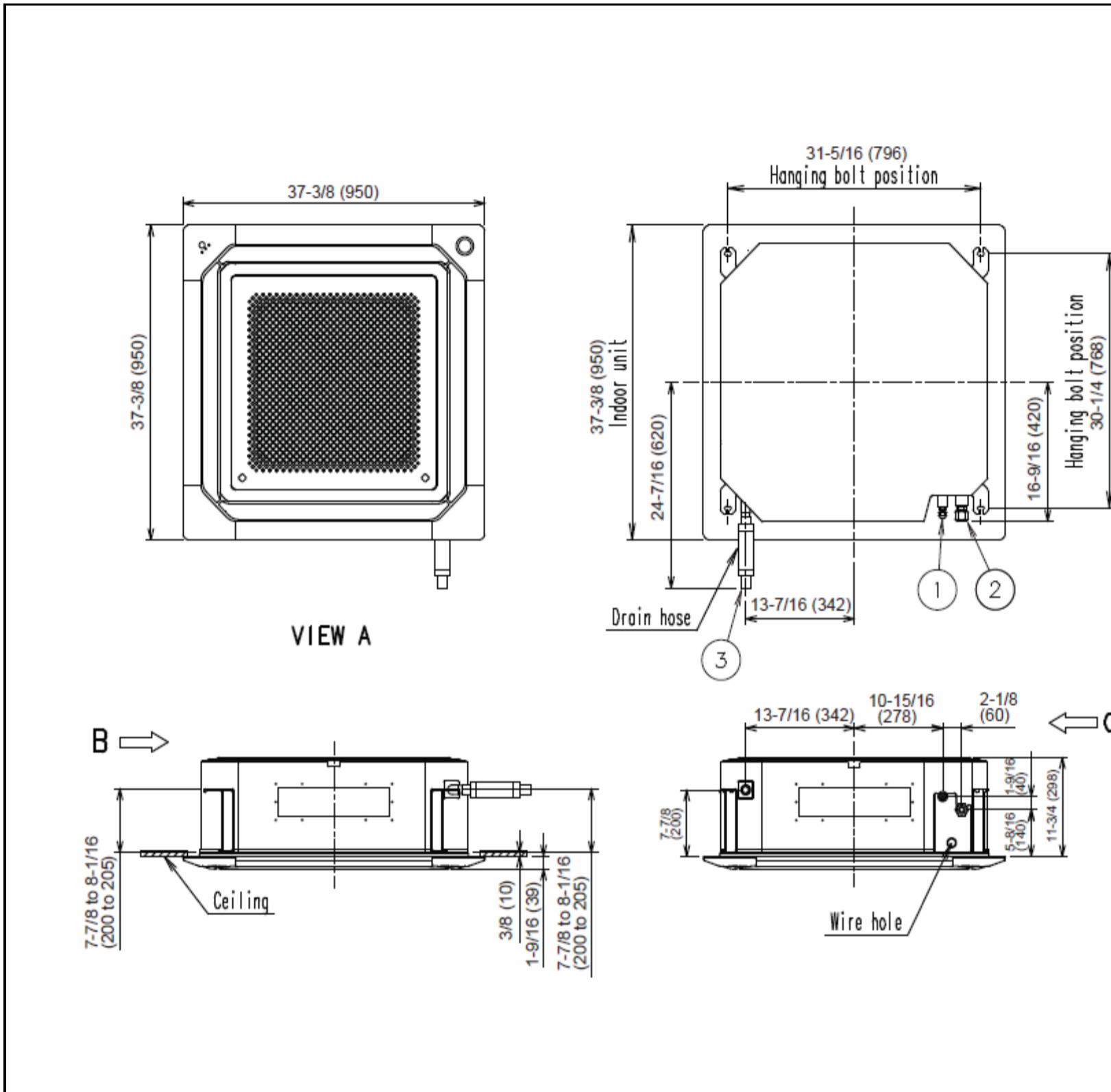
Fujitsu General America, Inc.  
 353 Route 46 West  
 Fairfield, NJ 07004  
 Toll Free: (888) 888-3424  
 Fax: (973) 836-0453  
 www.airstagevrf.com

SUBMITTAL AUUB48TLAV1

Circular Cassette (48000 BTU) Indoor Unit  
For Heat-recovery/Heat-pump Airstage VRF System

DIMENSIONS

Unit: In. (mm)



Fujitsu General America, Inc.  
353 Route 46 West  
Fairfield, NJ 07004  
Toll Free: (888) 888-3424  
Fax: (973) 836-0453  
www.airstagevrf.com