

**Inverter Driven Heat Pump**

**30,000 BTU Single Zone XLTH Wall Mounted System**

Job Name \_\_\_\_\_  
 Location \_\_\_\_\_  
 Engineer \_\_\_\_\_  
 Submitted To \_\_\_\_\_  
 Submitted By \_\_\_\_\_  
 Reference \_\_\_\_\_

Date \_\_\_\_\_  
 Approval \_\_\_\_\_  
 Construction \_\_\_\_\_  
 Unit No \_\_\_\_\_  
 Drawing No \_\_\_\_\_

**PRODUCT FEATURES**

- Auto Changeover
- 24 hr. / Weekly Timer
- Auto Louver: Up/Down
- Minimum Heat Mode
- Wireless Remote control
- Auto Restart
- 5F Low Ambient Cooling
- Auto Fan Mode
- Server Room Mode
- Base Pan Heater



Heating down to -15°F outdoor temperatures



**MODEL NUMBERS**

Indoor Unit	ASU30RLE
Outdoor Unit	AOU30RLXEH
System	30RLXEH

**EFFICIENCIES**

SEER	18.7	
EER	12.5	
HSPF	11.8	
COP	kW/kW	3.42
	Btu/hW	11.7

**OUTDOOR TEMPERATURE OPERATION RANGE**

Cooling	*F(°C)	-5 to 115 (-20 to 46)
Heating		-15 to 75(-15to 24)

**CAPACITIES**

Cooling	Rated	BTU/hW	30,000
	Min.–Max.		9900–32400
Heating	Rated		32,000
	Min.–Max.		8000–36200

**LINESET REQUIREMENTS**

Connection Method		Flare
Liquid	in (mm)	Ø3/8 (Ø9.52)
Gas		Ø5/8 (Ø15.88)
Pre-Charge Length	ft (m)	65 (20)
Minimum Length		16 (5)
Maximum Length		246 (75)
Max. Height Diff.		98 (30)

**INDOOR DIMENSIONS & WEIGHT**

Net (H x W x D)	in	13-6/16 x 45-4/16 x 9
	mm	340 x 1150 x 280
Gross (H x W x D)	in	17-11/16 x 50 x 15-15/16
	mm	450 x 1270 x 405
Net Weight	lb (kg)	40 (18)
Gross Weight		53 (24)

**OUTDOOR DIMENSIONS & WEIGHT**

Net (H x W x D)	in	50-13/16 x 35-7/16 x 13
	mm	1,290 x 900 x 330
Gross (H x W x D)	in	57-1/2 x 41-5/16 x 17-1/2
	mm	1,460 x 1,050 x 445
Net Weight	lb (kg)	205 ( 93)
Gross Weight		227 (103)

**Warranty Information**



7 Year Compressor, 5 Year Parts out-of-the-box Warranty



10 Year Compressor, 10 Year Parts Warranty when registered within 60 days of installation in a residence



12 Year Compressor, 12 Year Parts Warranty when registered within 60 days of installation in a residence, and installed by a Fujitsu Elite contractor

**ACCESSORIES**

UTY-TTRX	3rd Party Thermostat Converter
UTY-RNRUZ2	Touch Screen Wired Remote
UTY-RVNUM	Wired Remote
UTY-RSKU	Simple Remote
UTY-XWZX	Dry Contact Wire Kit
FJ-RC-WIFI-1NA	Intesis Wired WiFi Module
FJ-IR-WIFI-1NA	Intesis IR WiFi Module
UTY-TFNXZ2	WiFi Interface Module



This system combination is Energy Star qualified



Indoor Unit ETL#: 3170288  
 Outdoor Unit ETL#: 91987



## SUBMITTAL 30RLXEH

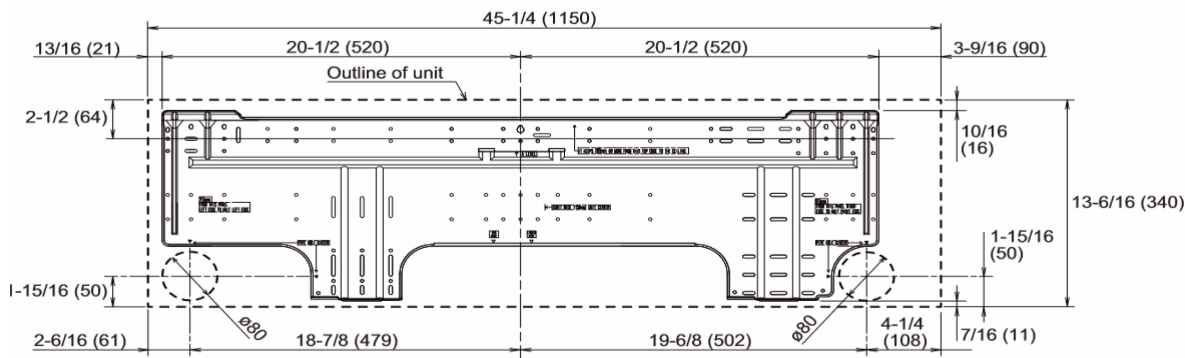


### Inverter Driven Heat Pump

### 30,000 BTU Single Zone XLTH Wall Mounted System

FAN DATA				ELECTRICAL SPECIFICATIONS					
Indoor Unit Airflow Rate	Cooling	High	CFM (m3/h)	812 (1380)	Voltage/Frequency/Phase			208/230V-60HZ	
		Medium		665 (1130)	Voltage Range			187-253V-60HZ	
		Low		536 (910)	Current	Cooling	Rated	A	10.6
		Quiet		418 (710)		Heating	Rated		12
	Heating	High	812 (1380)	Maximum Operating Current		Cooling	20.5		
		Medium	665 (1130)			Heating	20.5		
		Low	536 (910)	Starting Current			18.7		
		Quiet	418 (710)	MCA			25.6		
Outdoor Unit Airflow Rate		Cooling		4,032 (6,850)		Maximum Circuit Breaker		30	
		Heating		4,032 (6,850)					
SOUND PRESSURE				OTHER					
Indoor Unit	Cooling	High	dB (A)	50	Moisture Removal		pints/h (L/h)	4.6(9.7)	
		Medium		45	Energy Star			YES	
		Low		38	Drain hose		Material	PVC	
		Quiet		32	Size		in (mm)	Ø 9/16 (Ø 13.8) (I.D.) Ø 5/8 to Ø 11/16 (Ø 15.8 to Ø 16.7) (O.D.)	
	Heating	High	49	Operation Range		Cooling	°F (°C)	64 to 90 (18 to 32)	
		Medium	44				%RH	80 or less	
		Low	38			Heating	°F (°C)	88 (30) or less	
		Quiet	32						
Outdoor Unit		Cooling		53					
		Heating		54					
REFRIGERANT									
Type				R410A					
Charge	lb oz			6 lb. 12 oz.					
	kg			3,050					
Oil Type				POE (VG74)					

### Wall Bracket Data:



The Fujitsu logo is a worldwide trademark of Fujitsu General Limited. The Halcyon logo and name is a worldwide trademark of Fujitsu General Limited and is a registered trademark in Japan, the USA and other countries or areas. Copyright 2018 Fujitsu General America, Inc. Fujitsu's products are subject to continuous improvements. Fujitsu reserves the right to modify product design, specifications and information in this brochure without notice and without incurring any obligations.

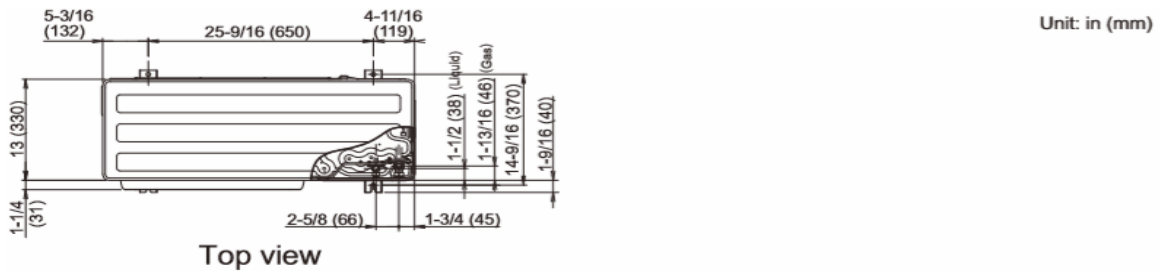
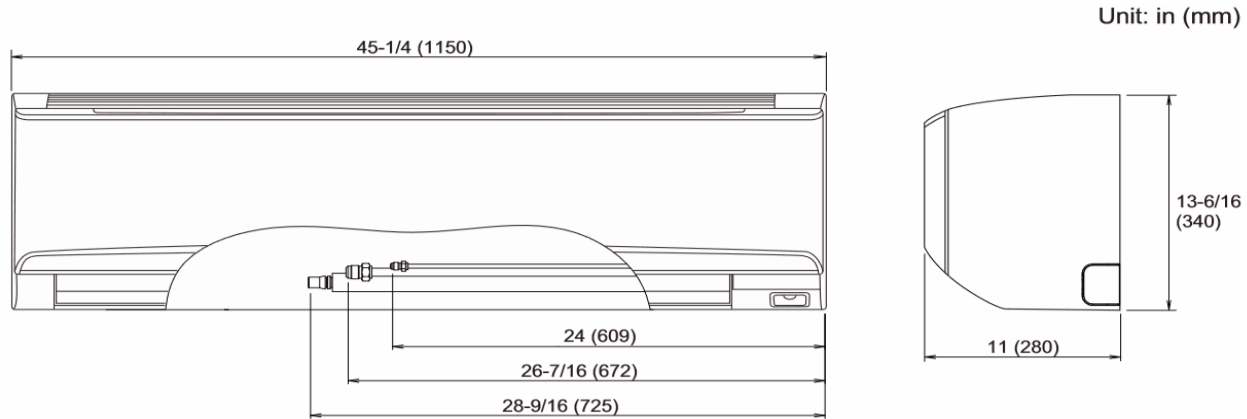
Note: Specifications are based on the following conditions:  
 Cooling: Indoor temperature of 80°F (26.7°C) DB/67°F (19.4°C) WB, and outdoor temperature of 95°F (35°C) DB/75°F (23.9°C) WB. Heating: Indoor temperature of 70°F (21.1°C) DB/60°F (15.6°C) WB, and outdoor temperature of 47°F (8.3°C) DB/43°F (6.1°C) WB. Pipe length: 25ft. (7.5m), Height difference: 0ft. (0m) (Outdoor unit - indoor unit).

Inverter Driven Heat Pump

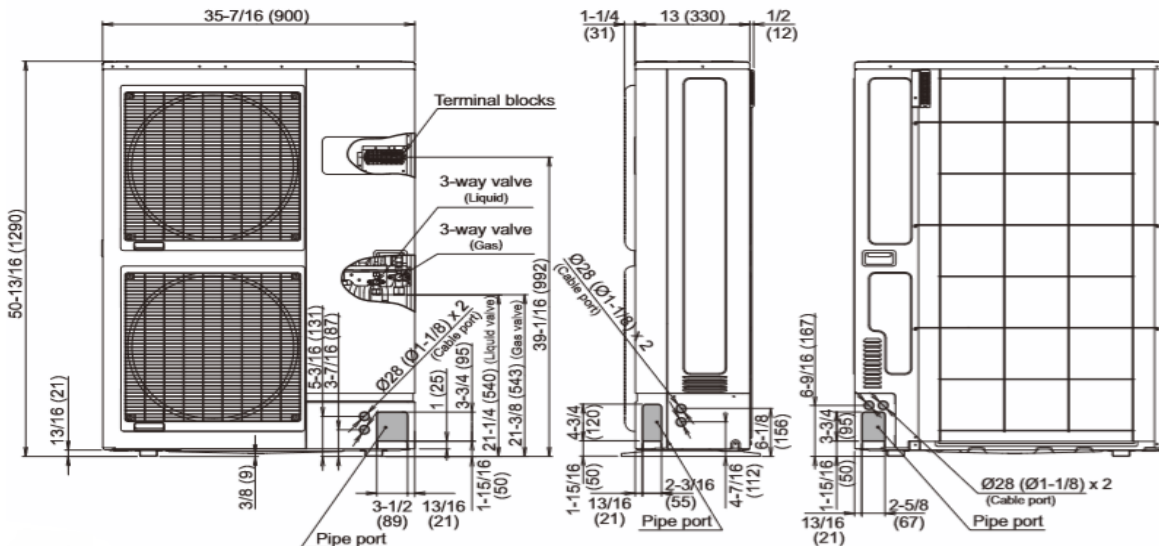
30,000 BTU Single Zone XLTH Wall Mounted System

DIMENSIONS

Units: In. (mm)



Top view



Front view

Side view

Rear view

The Fujitsu logo is a worldwide trademark of Fujitsu General Limited. The Halcyon logo and name is a worldwide trademark of Fujitsu General Limited and is a registered trademark in Japan, the USA and other countries or areas. Copyright 2018 Fujitsu General America, Inc. Fujitsu's products are subject to continuous improvements. Fujitsu reserves the right to modify product design, specifications and information in this brochure without notice and without incurring any obligations.

Note: Specifications are based on the following conditions:  
 Cooling: Indoor temperature of 80°F (26.7°C) DB/67°F (19.4°C) WB, and outdoor temperature of 95°F (35°C) DB/75°F (23.9°C) WB. Heating: Indoor temperature of 70°F (21.1°C) DB/60°F (15.6°C) WB, and outdoor temperature of 47°F (8.3°C) DB/43°F (6.1°C) WB. Pipe length: 25ft. (7.5m), Height difference: 0ft. (0m) (Outdoor unit - indoor unit).