

**Inverter Driven Heat Pump**

**18,000 BTU Compact Cassette Type**

Job Name \_\_\_\_\_  
 Location \_\_\_\_\_  
 Engineer \_\_\_\_\_  
 Submitted To \_\_\_\_\_  
 Submitted By \_\_\_\_\_  
 Reference \_\_\_\_\_

Date \_\_\_\_\_  
 Approval \_\_\_\_\_  
 Construction \_\_\_\_\_  
 Unit No \_\_\_\_\_  
 Drawing No \_\_\_\_\_

**PRODUCT FEATURES**

- Wireless remote controller
- Automatic airflow adjustment
- Auto/Cool/Dry/Fan/Heat/modes
- 24 Hr. timer
- Powerful mode
- Auto changeover
- Cold prevention



**MODEL NUMBERS**

Indoor Unit	AUU18RLF
Nominal Capacity	18,000

**LINESET REQUIREMENTS**

Connection Method	Flare	
Liquid	in (mm)	Ø1/4 (Ø6.35)
Gas		Ø1/2 (Ø12.70)
Drain hose	Material	Hard PVC
	in	Ø 3/4 (I.D.), Ø 1-1/16 (O.D.)
	mm	Ø 20.7 (I.D.), Ø 26.6 (O.D.)

**INDOOR DIMENSIONS & WEIGHT**

Net (H x W x D)	in	9-5/8 x 22-7/16 x 22-7/16
	mm	245 x 570 x 570
Gross (H x W x D)	in	10-7/16 x 28-3/4 x 24-5/8
	mm	265 x 730 x 625
Net Weight	lb (kg)	33 (15)
Gross Weight		40 (18)

**ELECTRICAL SPECIFICATIONS**

Voltage/Frequency/Phase	208/230 V ~ 60 Hz
Voltage Range	187–264 V
Running Current	A 0.3
Input Power	W 39

**SOUND PRESSURE**

Indoor Unit	Cooling	High	dB (A)	42
		Medium		37
		Low		33
		Quiet		29
	Heating	High	dB (A)	44
		Medium		40
		Low		37
		Quiet		30

**FAN DATA**

Airflow Rate	Cooling	High	CFM (m3/h)	441 (750)
		Medium		359 (610)
		Low		306(520)
		Quiet		241 (410)
	Heating	High	CFM (m3/h)	471 (800)
		Medium		418 (710)
		Low		353 (600)
		Quiet		265 (450)

**Warranty Information**



7 Year Compressor, 5 Year Parts out-of-the-box Warranty



10 Year Compressor, 10 Year Parts Warranty when registered within 60 days of installation in a residence



12 Year Compressor, 12 Year Parts Warranty when registered within 60 days of installation in a residence, and installed by a Fujitsu Elite contractor

**ACCESSORIES**

UTY-TTRX	3rd Party Thermostat Converter
UTY-RNNUM	Wired Remote
UTY-RVNUM	Wired Remote w/backlight
UTY-RSNUM	Simple Remote
UTY-XWZX	Dry Contact Wire Kit
FJ-IR-WIFI-1NA	Intesis IR WiFi module
FJ-RC-WIFI-1NA	Intesis Wired WiFi module
UTY-TFNXZ2	WiFi interface Module
UTZ-VXAA	Fresh Air Intake



ETL#: 0

Effective Date: 8/26/2020

Version AUU18RLF -2020B

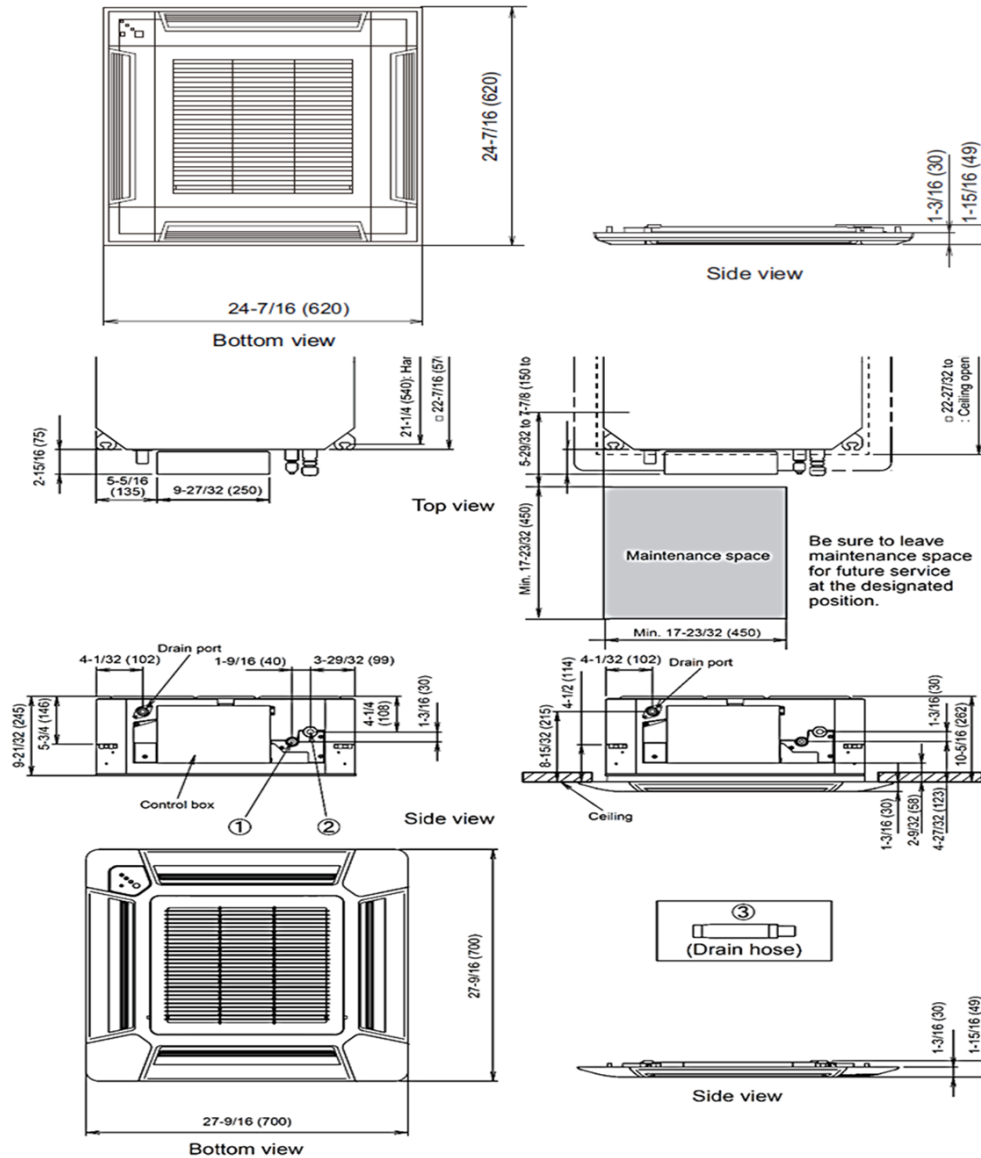
Due to continuous product improvements, specifications are subject to change without notice. Please log in to the Fujitsu Portal for the most up-to-date documentation <https://portal.fujitsugeneral.com>

Inverter Driven Heat Pump

18,000 BTU Compact Cassette Type

DIMENSIONS

Units: In. (mm)



The Fujitsu logo is a worldwide trademark of Fujitsu General Limited. The Halcyon logo and name is a worldwide trademark of Fujitsu General Limited and is a registered trademark in Japan, the USA and other countries or areas. Copyright 2018 Fujitsu General America, Inc. Fujitsu's products are subject to continuous improvements. Fujitsu reserves the right to modify product design, specifications and information in this brochure without notice and without incurring any obligations.

Note: Specifications are based on the following conditions:  
 Cooling: Indoor temperature of 80°F (26.7°C) DB/67°F (19.4°C) WB, and outdoor temperature of 95°F (35°C) DB/75°F (23.9°C) WB. Heating: Indoor temperature of 70°F (21.1°C) DB/60°F (15.6°C) WB, and outdoor temperature of 47°F (8.3°C) DB/43°F (6.1°C) WB. Pipe length: 25ft. (7.5m), Height difference: 0ft. (0m) (Outdoor unit - indoor unit).